

用途 Application:

- 用于高处作业吊篮、擦窗机、手板葫芦及风力发电风机塔筒升降机系统 Used in temporarily installed suspended access equipment, window cleaning equipment, manual hoisting devices and lifting system of the wind turbine tower

表面状态 Surface Coating:

- 热镀锌 Hot galvanized

包装方式 Packing type:

- 工字轮或脱件 Spool or coil

特点 Characteristics:

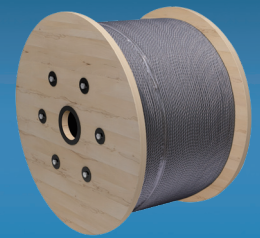
- 定尺钢丝生产 Made of length determined steel wires
- 线接触结构、直径公差小、可挠性强 Parallel lay structure, small diameter tolerance, flexible

标准 Standard:

- 按YB/T 4575, 也可根据顾客的技术要求生产 In accordance with YB/T 4575, as well as customers' requests

吊篮用钢丝绳

STEEL WIRE ROPES FOR TEMPORARILY INSTALLED SUSPENDED ACCESS EQUIPMENT



使用注意事项 Remarks during use and handling:

- 运输过程中应该轻提轻放, 防止撞击损坏外包装, 防潮并严禁淋雨, 钢丝绳应储存在干燥通风的室内
During transportation, handle with care, avoid bumping and damaging the outer packing materials. Moisture and rain prohibited. Steel wire ropes must be stored in dry and well ventilated indoors.
- 使用过程中应采用工字轮退转放线并注意放线方向, 避免产生附加应力
Pay attention to directions of pay-off and take-up to avoid generating additional stress.
- 加工焊头过程中, 应使钢丝绳处于松弛无应力状态下进行
During the process of welding, Ropes must be under relaxation and stressless conditions.
- 现场使用中, 应注意钢丝绳穿行方向及尾部自然悬垂, 避免产生附加应力及钢丝绳弯折
At work site, pay attention to the threading direction and the ends natural overhang to avoid additional stress and curving of the wire ropes.



4×25Fi-FC 4×31WS-FC

公称直径, D Nominal diameter		参考重量 Approximate weight	公称抗拉强度, MPa Nominal tensile strength					
直径 Diameter	允许偏差 Tolerances		1870	1960	2060	2160	2260	2360
mm	%D	kg/100 m	最小破断拉力 Min. breaking load					
			kN					
6.0	+3 -2	14.8	24.2	25.4	26.7	28.0	29.3	30.6
7.0		20.1	33.0	34.6	36.3	38.1	40.0	41.6
8.0		26.2	43.1	45.2	47.5	49.8	52.1	54.4
8.3		28.2	46.4	48.6	51.1	53.6	56.0	58.5
8.6		30.3	49.8	52.2	54.8	57.5	60.2	62.8
9.0		33.2	54.5	57.2	60.1	63.0	65.9	68.8
9.5		37.0	60.8	63.7	66.9	70.2	73.4	76.7
10		41.0	67.3	70.6	74.2	77.8	81.4	85.0
12		59.2	96.9	102	107	112	117	122
14		80.6	132	138	145	152	159	167
16		105	172	180	190	199	208	217

6X19W-WSC 6X19S-WSC

公称直径, D Nominal diameter		参考重量 Approximate weight	公称抗拉强度, MPa Nominal tensile strength					
直径 Diameter	允许偏差 Tolerances		1870	1960	2060	2160	2260	2360
mm	%D	kg/100 m	最小破断拉力 Min. breaking load					
			kN					
6.0	+3 -2	15.0	24.0	25.1	26.4	27.7	29.0	30.2
7.0		20.5	32.6	34.2	35.9	37.7	39.4	41.2
8.0		26.8	42.6	44.7	46.9	49.2	51.5	53.8
8.3		28.8	45.9	48.1	50.5	53.0	55.4	57.9
8.6		31.0	49.2	51.6	54.2	56.9	59.5	62.1
9.0		33.9	53.9	56.5	59.4	62.3	65.2	68.1
9.5		37.7	60.1	63.0	66.2	69.4	72.6	75.8
10		41.8	66.6	70.0	73.3	76.9	80.5	84.0
12		60.2	95.9	100	106	111	116	121

吊篮用钢丝绳 技术参数 Technical parameters

6×31WS-FC 6×31WS-WSC 6×36WS-FC 6×36WS-WSC

公称直径, D Nominal diameter		参考重量 Approximate weight		公称抗拉强度, MPa Nominal tensile strength											
				1870		1960		2060		2160		2260		2360	
直径 Diameter	允许偏差 Tolerances	kg/100 m		最小破断拉力 Min. breaking load											
				纤维芯 FC	钢芯 WSC	纤维芯 FC	钢芯 WSC	纤维芯 FC	钢芯 WSC	纤维芯 FC	钢芯 WSC	纤维芯 FC	钢芯 WSC	纤维芯 FC	钢芯 WSC
mm	%D	纤维芯 FC	钢芯 WSC	纤维芯 FC	钢芯 WSC	纤维芯 FC	钢芯 WSC	纤维芯 FC	钢芯 WSC	纤维芯 FC	钢芯 WSC	纤维芯 FC	钢芯 WSC	纤维芯 FC	钢芯 WSC
6.0	+3 -2	13.7	15.1	22.2	24.0	23.3	25.1	24.5	26.4	25.7	27.7	26.9	28.9	28.1	30.2
7.0		18.6	20.5	30.2	32.6	31.7	34.2	33.3	35.9	34.9	37.7	36.6	39.4	38.2	41.1
8.0		24.3	26.8	39.5	42.6	41.4	44.7	43.5	47.0	45.6	49.2	47.7	51.5	49.8	53.8
8.3		26.2	28.8	42.5	45.9	44.6	48.1	46.9	50.6	49.1	53.0	51.4	55.5	53.7	57.9
8.6		28.1	31.0	45.6	49.3	47.9	51.6	50.3	54.2	52.7	56.9	55.2	59.5	57.7	62.1
9.0		30.8	33.9	50.0	53.9	52.4	56.5	55.1	59.4	57.8	62.3	60.4	65.1	63.1	68.0
9.5		34.3	37.7	55.7	60.1	58.4	63.0	61.4	66.2	64.3	69.4	67.3	72.6	70.3	75.9
10		38.0	41.8	61.7	66.6	64.7	69.8	68.0	73.4	71.3	76.9	74.6	80.5	77.9	84.0
12		54.7	60.2	88.9	95.9	93.1	100	97.9	105	103	111	107	115	112	120
14		74.5	--	121	--	127	--	133	--	140	--	146	--	153	--
16		97.3	--	158	--	166	--	174	--	183	--	191	--	200	--

注: 根据顾客需要, 还可提供其他结构、规格、抗拉强度的产品。

NOTE: Engineering design can be provided according to customers' requests.